

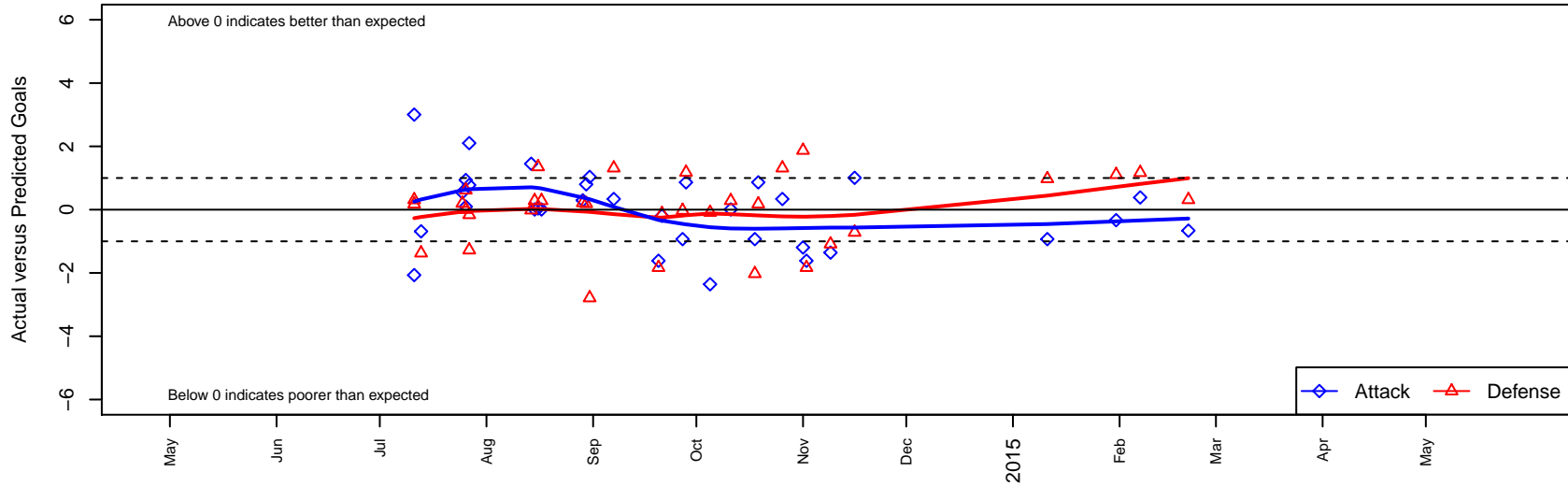
WPFC Fury Black B99

Franklin Pierce SC
 Tacoma, WA
 B99 total strength=1566
 attack=13.3 defense=15.16
 fall league = PSPL Premier U15

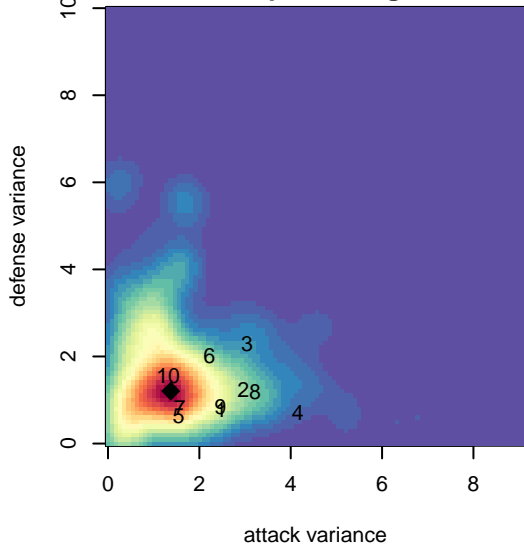
alt names used:
 FPSC FURY B99 BLACK (WA)
 FPSC Fury B99 Black
 FPSC Fury [B99]
 FPSC Fury Black
 FPSC FURY B99 BLACK (WA)

Venues played:
 2014 King of the Hill U15-16
 2014 Sounders FC Cup BU15
 2014 Bigfoot Gold U15
 2014 Starfire Labor Day Cup U15
 2014 PSPL Premier U15
 2014 WA Cup U15 Gold U15

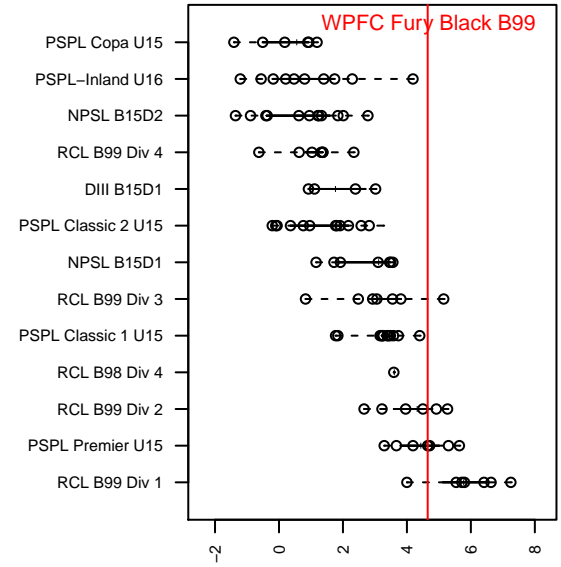
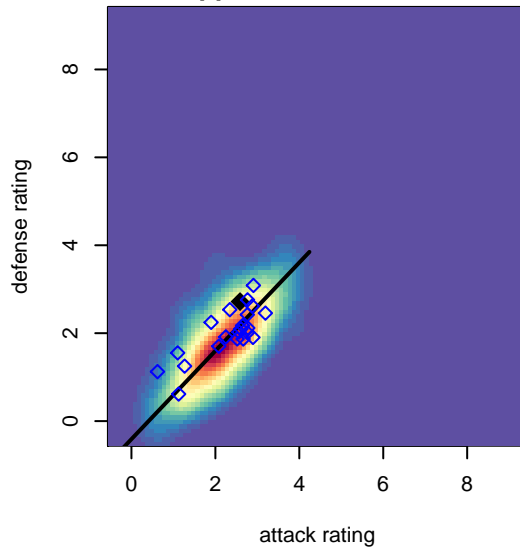
WPFC Fury Black B99
 Dots are actual minus expected GF (blue circles) and GA (red triangles).
 Blue line is smoothed change in attack strength. Red is smoothed change in defense strength.



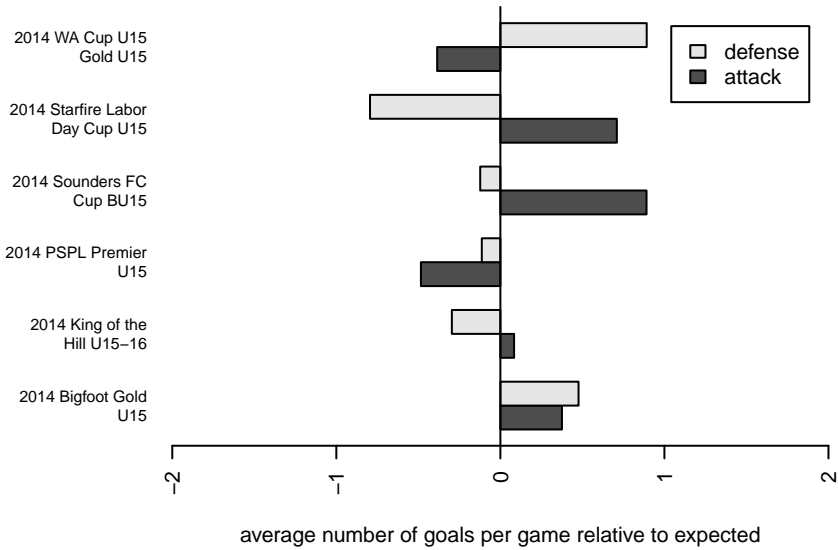
**attack and defense variance (black dot)
relative to other teams
and top 10 in region**



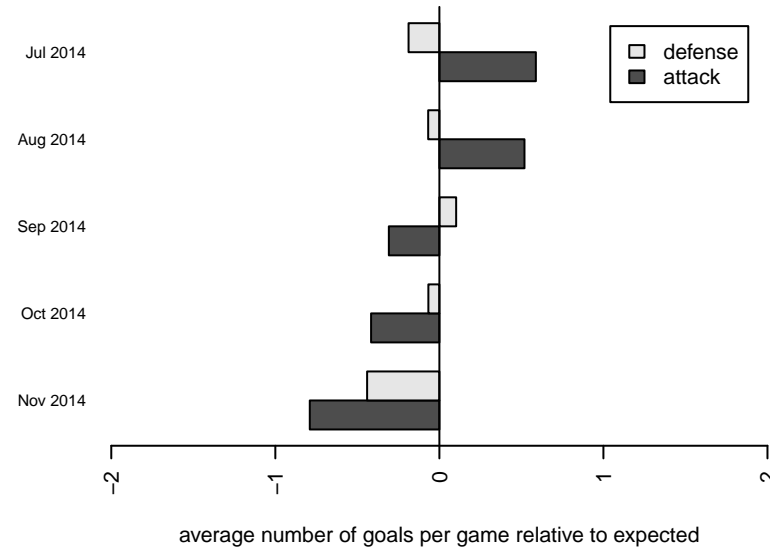
**attack and defense rating
relative to others at age
and all opponents in last 13 months**



Performance relative to 13 month average



Performance relative to 13 month average



date	home		away		venue	pred.home	pred.away
2015-02-21	WPFC Fury Black B99	0	MV Bombers B99	1	2014 WA Cup U15 Gold U15	0.66	1.31
2015-02-07	ASE Emerald B99	0	WPFC Fury Black B99	2	2014 WA Cup U15 Gold U15	1.17	1.61
2015-01-31	WPFC Fury Black B99	2	Dragons FC B99	0	2014 WA Cup U15 Gold U15	2.33	1.11
2015-01-11	WPFC Fury Black B99	1	Wenatchee Fire Black B99	0	2014 WA Cup U15 Gold U15	1.93	0.98
2014-11-16	Highline Premier Blue B99	2	WPFC Fury Black B99	3	2014 PSPL Premier U15	1.28	1.99
2014-11-09	Kitsap Pumas 1 B99	2	WPFC Fury Black B99	1	2014 PSPL Premier U15	0.91	2.36
2014-11-02	WPFC Fury Black B99	0	ASE Emerald B99	3	2014 PSPL Premier U15	1.61	1.17
2014-11-01	WPFC Fury Black B99	0	Cobra Aguilitas B99	0	2014 PSPL Premier U15	1.19	1.87
2014-10-26	MV Bombers B99	0	WPFC Fury Black B99	1	2014 PSPL Premier U15	1.31	0.66
2014-10-19	Central WA SA Navy B99	1	WPFC Fury Black B99	2	2014 PSPL Premier U15	1.18	1.14
2014-10-18	Wenatchee Fire Black B99	3	WPFC Fury Black B99	1	2014 PSPL Premier U15	0.98	1.93
2014-10-11	WPFC Fury Black B99	2	Highline Premier Blue B99	1	2014 PSPL Premier U15	1.99	1.28
2014-10-05	WPFC Fury Black B99	0	Kitsap Pumas 1 B99	1	2014 PSPL Premier U15	2.36	0.91
2014-09-28	WPFC Fury Black B99	2	Central WA SA Navy B99	0	2014 PSPL Premier U15	1.14	1.18
2014-09-27	WPFC Fury Black B99	1	Wenatchee Fire Black B99	1	2014 PSPL Premier U15	1.93	0.98
2014-09-21	Cobra Aguilitas B99	2	WPFC Fury Black B99	1	2014 PSPL Premier U15	1.87	1.19
2014-09-20	ASE Emerald B99	3	WPFC Fury Black B99	0	2014 PSPL Premier U15	1.17	1.61
2014-09-07	WPFC Fury Black B99	1	MV Bombers B99	0	2014 PSPL Premier U15	0.66	1.31
2014-08-31	WPFC Fury Black B99	3	Kitsap Alliance FC Red B99	4	2014 Starfire Labor Day Cup U15	1.97	1.21
2014-08-30	Coquitlam Metro Ford Millennium 2000B	1	WPFC Fury Black B99	2	2014 Starfire Labor Day Cup U15	1.19	1.20
2014-08-29	ISC Gunners B B99	0	WPFC Fury Black B99	8	2014 Starfire Labor Day Cup U15	0.22	7.71
2014-08-17	WPFC Fury Black B99	2	Highline Premier Blue B99	1	2014 Bigfoot Gold U15	1.99	1.28
2014-08-16	Crossfire Premier B B99	0	WPFC Fury Black B99	1	2014 Bigfoot Gold U15	1.35	0.96
2014-08-15	Highline Premier Blue B99	1	WPFC Fury Black B99	2	2014 Bigfoot Gold U15	1.28	1.99
2014-08-14	Snohomish United Black B99	1	WPFC Fury Black B99	3	2014 Bigfoot Gold U15	0.99	1.55
2014-07-27	WPFC Fury Black B99	2	NWN Red B99	1	2014 Sounders FC Cup BU15	1.22	0.84
2014-07-27	Pumas 00 UNAM Seattle B99	2	WPFC Fury Black B99	4	2014 Sounders FC Cup BU15	0.72	1.90
2014-07-26	WPFC Fury Black B99	4	Washington Timbers Forrest B99	0	2014 Sounders FC Cup BU15	3.06	0.62

date	home		away		venue	pred.home	pred.away
2014-07-26	WPFC Fury Black B99	2	Wenatchee Valley United B99	1	2014 Sounders FC Cup BU15	1.91	1.00
2014-07-25	NWN Blue B99	0	WPFC Fury Black B99	3	2014 Sounders FC Cup BU15	0.20	2.46
2014-07-13	WPFC Fury Black B99	1	RSA Elite B99	2	2014 King of the Hill U15-16	1.69	0.63
2014-07-11	WPFC Fury Black B99	3	MVP Rapids White B99	0	2014 King of the Hill U15-16	5.07	0.17
2014-07-11	Highline Premier Red B99	0	WPFC Fury Black B99	7	2014 King of the Hill U15-16	0.31	4.00